



PREFA SOLAR

SOLAR PANEL PREFALZ 500/650

SOLAR PANEL SYSTEM FOR PREFALZ ROOFS

Symbol image



MADE IN AUSTRIA

The solar panel PREFALZ is developed and produced in Austria to a high standard and is 100% compatible with PREFA's complete system



PERFORMANCE GUARANTEE

Solar panel: 10-year product guarantee, performance guarantee: 85% of the solar panel's nominal capacity after 25 years, additional 25-year product guarantee on the PREFA seam clamps



RESISTANCE

Robust, durable glass/glass PV module with the latest TOPCon cell technology



RETROFITTING POSSIBLE

Solar panels can be mounted on new PREFALZ roofs as well as retrofitted to existing PREFALZ roofs



AESTHETIC

Parallel to the roof, maintains the character of the double lock seam low build up system, adapted to the tray width of the PREFALZ roofing



INDEPENDENT, ECONOMICAL & SUSTAINABLE

The sun is always available as an energy source, the self-produced energy can be used directly, fed into the grid or stored. CO₂-friendly production site



2 IN 1

Seam and solar panel clamp in one product, simple and fast installation due to few components required

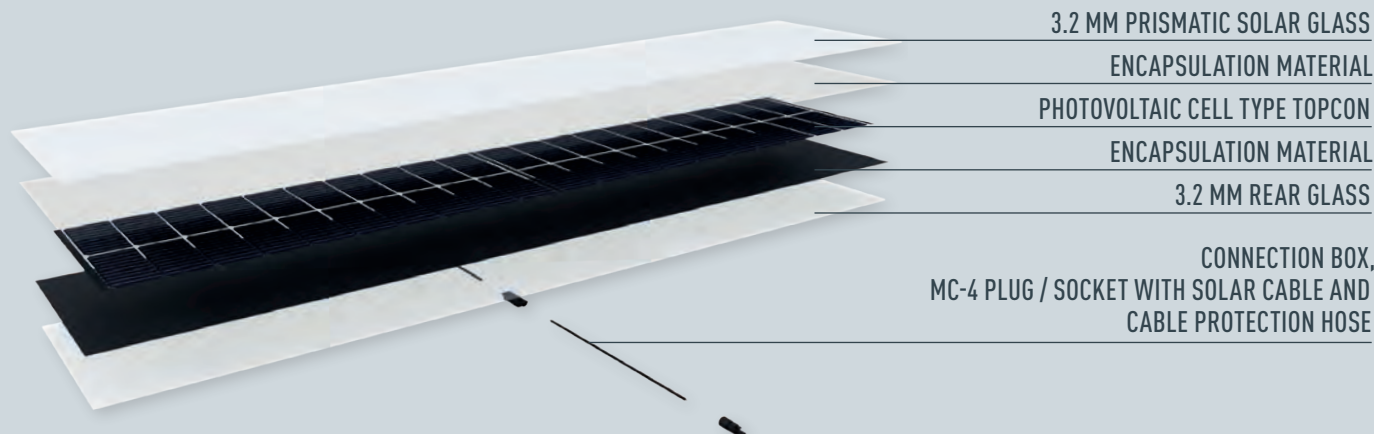


NO ROOF PENETRATION

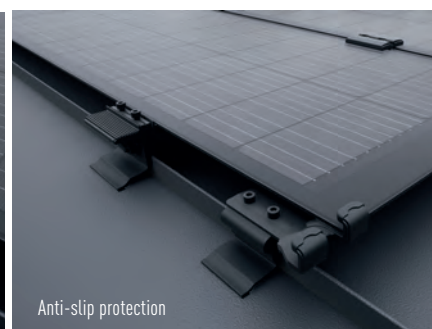
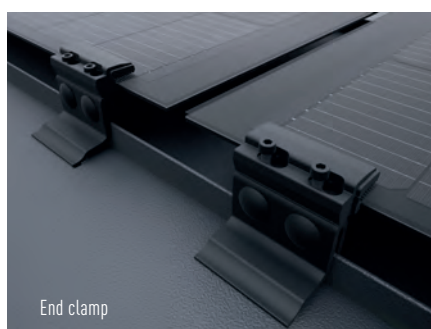
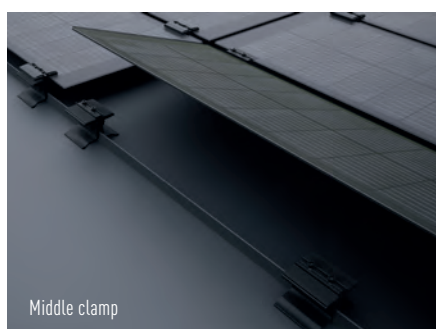
The solar panel clamps are used to attach the solar panels directly to the double locked seams and there is no need for the roof covering to be penetrated by screws, etc.

WWW.PREFA.SOLAR

SOLAR PANEL SYSTEMS



SOLAR PANEL PREFALZ



TECHNICAL DATA – SOLAR PANEL PREFALZ 500

- Performance
150 Wp, space required per kWp: 5.44 m²
- Dimensions
2,000 × 408 mm
- Weight
15 kg (18 kg/m²)
- Cell type
TOPCon
- Material
Front glass 3.2 mm
Rear glass 3.2 mm
- Plug
Standard MC4 plug/socket
- Solar panel guarantee
10-year product guarantee, 25-year performance guarantee: 85%
- System component guarantee
25-year product guarantee
- Roof pitch
from 3° (5%)
- Fastening
With a solar middle/end clamp PREFALZ 500/650 on a double-lock standing seam with solar panel anti-slip protection, the number of clamps per solar panel varies depending on the roof pitch and location.

Observe national regulations and guidelines.
Tested and approved for PREFALZ double-lock standing seam roofing.

TECHNICAL DATA – SOLAR PANEL PREFALZ 650

- Performance
150 Wp, space required per kWp: 7.44 m²
- Dimensions
2,000 × 558 mm
- Weight
21 kg (18 kg/m²)
- Cell type
TOPCon
- Material
Front glass 3.2 mm
Rear glass 3.2 mm
- Plug
Standard MC4 plug/socket
- Solar panel guarantee
10-year product guarantee, 25-year performance guarantee: 85%
- System component guarantee
25-year product guarantee
- Roof pitch
from 3° (5%)
- Fastening
With a solar middle/end clamp PREFALZ 500/650 on a double-lock standing seam with solar panel anti-slip protection, the number of clamps per solar panel varies depending on the roof pitch and location.

Observe national regulations and guidelines.
Tested and approved for PREFALZ double-lock standing seam roofing.